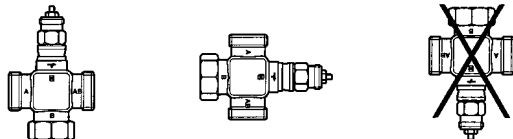
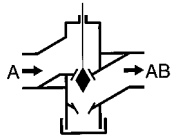
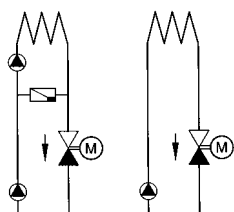


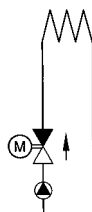
## V5832B/V5833A (DN 25 – 40)

Montageanleitung • Mounting instructions • Instruction de montage  
Instrukcja montażu

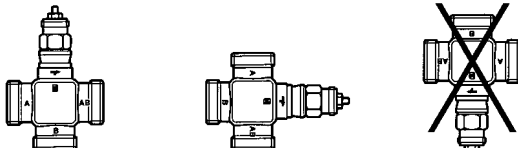
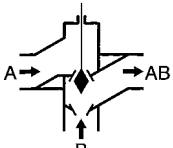
<b>V5832B</b>  <b>PN 16</b> $\vartheta_{\max.} 130^{\circ}\text{C}$		
--	---	---

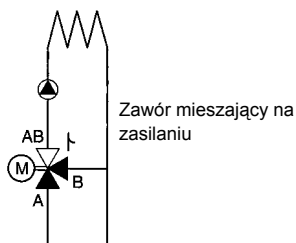


Zawór na powrocie

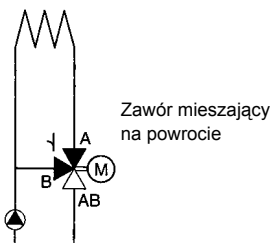


Zawór na zasilaniu

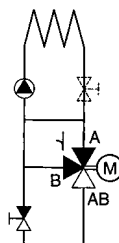
<b>V5833A</b>  <b>PN 16</b> $\vartheta_{\max.} 130^{\circ}\text{C}$		
--	---	---



Zawór mieszający na zasilaniu



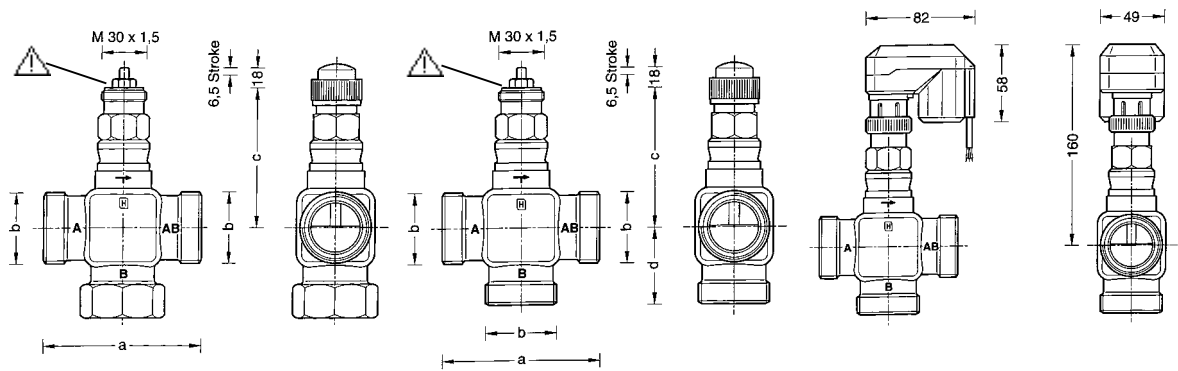
Zawór mieszający na powrocie



System wtryskowy:  
Zawór mieszający na powrocie

VA5832B

VA5833A



PL

Uwaga podczas demontażu

- Mocno napięta sprężyna pod kołpakiem

V5832B (DN 25 – 40)

	a	b	c
DN 25	105 mm	G 1 1/2 A*	92 mm
DN 32	105 mm	G 2 A*	92 mm
DN 40	130 mm	G 2 1/4 A*	98 mm

V5833A (DN 25 – 40)

	a	b	c	d
DN 25	105 mm	G 1 1/2 A*	92 mm	52,5 mm
DN 32	105 mm	G 2 A*	92 mm	52,5 mm
DN 40	130 mm	G 2 1/4 A*	98 mm	65,0 mm

ISO 7/1	DN	Type
	25	AC-25 T
	32	AC-32 T
	40	AC-40 T
	25	AC-25 TF
	32	AC-32 TF
	40	AC-40 TF

Type	b	e	f
AC-25 TF	G 1 1/2		Rp 1
AC-25 T	G 1 1/2	R 1	
AC-32 TF	G 2		Rp 1 1/4
AC-32 T	G 2	R 1 1/4	
AC-40 TF	G 2 1/4		RP 1 1/2
AC-40 T	G 2 1/4	R 1 1/2	

\* ISO 228/1